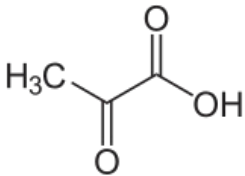
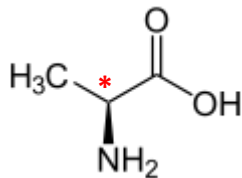


1.) Zeichne in den folgenden Verbindungen chirale Zentren ein:

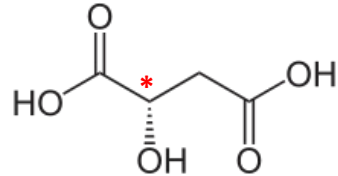
a) Pyruvat:



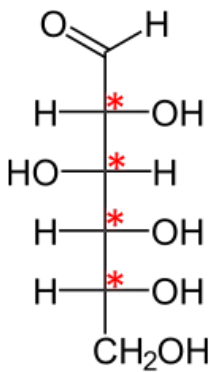
b) Alanin



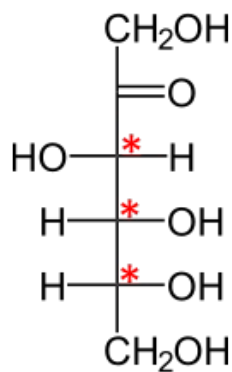
c) Äpfelsäure



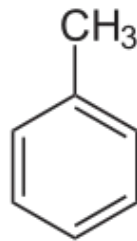
d) Glukose



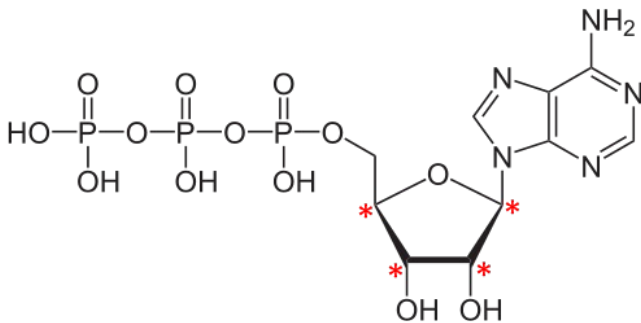
e) Fruktose



f) Toluol

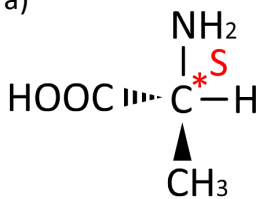


g) Adenosintriphosphat (ATP)

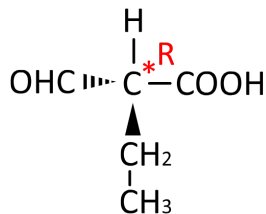


2.) Markieren sie bei folgenden Molekülen die chiralen Zentren und ob es sich um ein S- oder R-Stereozentrum handelt.

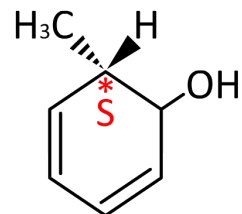
a)



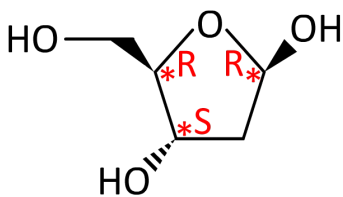
b)



c)



d)



e)

